



Welcome to JPMorgan Chase – San Antonio

What to Expect

At JPMorgan Chase - San Antonio, your child will be safe, well cared for, loved, and supported by our skilled teachers. Our carefully crafted back-up care program offers age-appropriate programs to encourage curious, happy, and confident children at every age and stage.

Our center has been welcoming families since 2002 for their back-up, school vacation, and summer care needs. JPMC employees now have exclusive access to on-site full service child care. Throughout the year, we offer virtual family information sessions and workshops, themed program weeks, and many other events for children ages 6 weeks to 12 years.

If you would like more information about our back-up care or full service care programs, or if you would like a virtual tour, we would be more than happy to schedule one at your convenience. Our center administrative team can be reached at 210-586-2273 or veronica.j.almanza@jpmorganchase.com.

Health & Safety

At **Bright Horizons**® your child's health, safety, and wellness is our top priority. We continually monitor state and local public health guidelines, consult with our medical experts, and use our considerable experience to guide our practices. We're prepared to respond quickly and adjust those health and safety practices as needed, to ensure children, families, and teachers are protected.

Designed for the well-being of staff, children, and families

- ▶ A daily health check policy that strives to mitigate the spread of illnesses
- ▶ Frequent cleaning and disinfecting of high-touch surfaces, toys, and soft items
- ▶ Strict handwashing and sanitary policies to prevent the spread of illnesses
- ▶ Safety and security procedures designed to keep our families and staff protected
- ▶ Secure entrances to all centers
- ▶ Curriculum that emphasizes healthy practices for children

What to Bring

Enrollment Forms & Health Records

Prior to care, we are required to obtain additional information about your family. Many of the forms are available on our Back-up Care portal: backup.brighthorizons.com/JPMC, and will need to be submitted along with your child's health and immunization records.

Meals & Snacks

Children in our care are provided a breakfast, lunch, and two afternoon snacks. Snacks consist of a fruit, vegetable, protein or carbohydrate, and milk. Our lunch menu is prepared and delivered by our onsite caterer, Aramark, and follows the Partnership for a Healthier America guidelines for school lunches. We do allow families to send lunch and snacks for their child from home. *Please note: when packing your child's lunch that our center is nut-safe.* In our infant classroom there is a fridge available for bottles; all bottles are to be prepared at home and will be warmed using a bottle warmer.

Items from Home

- ▶ Spare clothing
- ▶ Diapers and wipes
- ▶ Favorite toy, book, blanket, etc. to ease the drop-off transition or for rest time
- ▶ Ready-to-eat lunch and bottles (*infants only*)



Center Location

Directions: From 410, take highway 151 toward Sea World. Exit Wiseman Blvd and turn left.

The center is located in the Chase San Antonio Operations center, east side of building 1.

Our Staff



Veronica, Center Director

I love Bright Horizons because they truly care about their staff. They believe in providing staff and children the tools necessary to build strong foundations and relationships within safe environments.

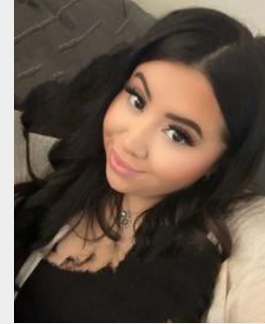
In education for over 30 years.



Angelica, Health & Safety Director

I love Bright Horizons because they provide me the opportunity to further my education, provide career advancement opportunities, and support me as an individual.

In education for over 20 years.



Krista, Instructional Coach

I love Bright Horizons because I am able to continue my education, and work with a group of professional people that share a passion in preparing children and their families for life-long success.

In education for over 7 years.

Our Teaching Staff

Our teachers are the heart of our program — people with the skills, passion, and dedication to make early education their career. They are experienced and dedicated professionals who meet strict certification requirements. Through *Discovery Driven Learning™*, our teaching and learning framework, these talented educators focus on children's unique interests while supporting today's big milestones and tomorrow's success. We support our educators with our own award-winning training, as well as learning opportunities to further advance their careers and skills through training, certificates, and college degrees.

JPMorgan Chase - San Antonio

3700 Wiseman Blvd., Building 1, Child Care, San Antonio, TX 78251
210-586-2273 | veronica.j.almanza@jpmorganchase.com

For *Bright Horizons Back-up Care™* reservations:

- ▶ **Visit** | backup.brighthorizons.com/JPMC
- ▶ **Call** | 210-586-2273

